

# **MAC OS X connection to the VICUNI Wireless Network**

The following documentation illustrates the procedure on how to connect to the Vicuni wireless network for a MAC OS platform.

The documentation will highlight and demonstrate the following in order to access the Vicuni wireless network:

1. What is Vicuni?
2. What do you need to use Vicuni?
3. Setting up Vicuni.
4. Connecting to the Vicuni wireless network.
5. Helpful hints.

## 1. What is Vicuni?

VicUni is a wireless network service providing all VU staff and students with valid AD login credentials to be able to connect to VU's networking resources, such as the Internet and Email.

VicUni wireless network is available at the following campuses:

St Albans  
Sunshine  
Werribee  
Melton  
City Flinders St  
City Flinders Lane  
City King St  
City Queen St  
Footscray Nicholson  
Footscray Park

## 2. What do you need to use Vicuni?

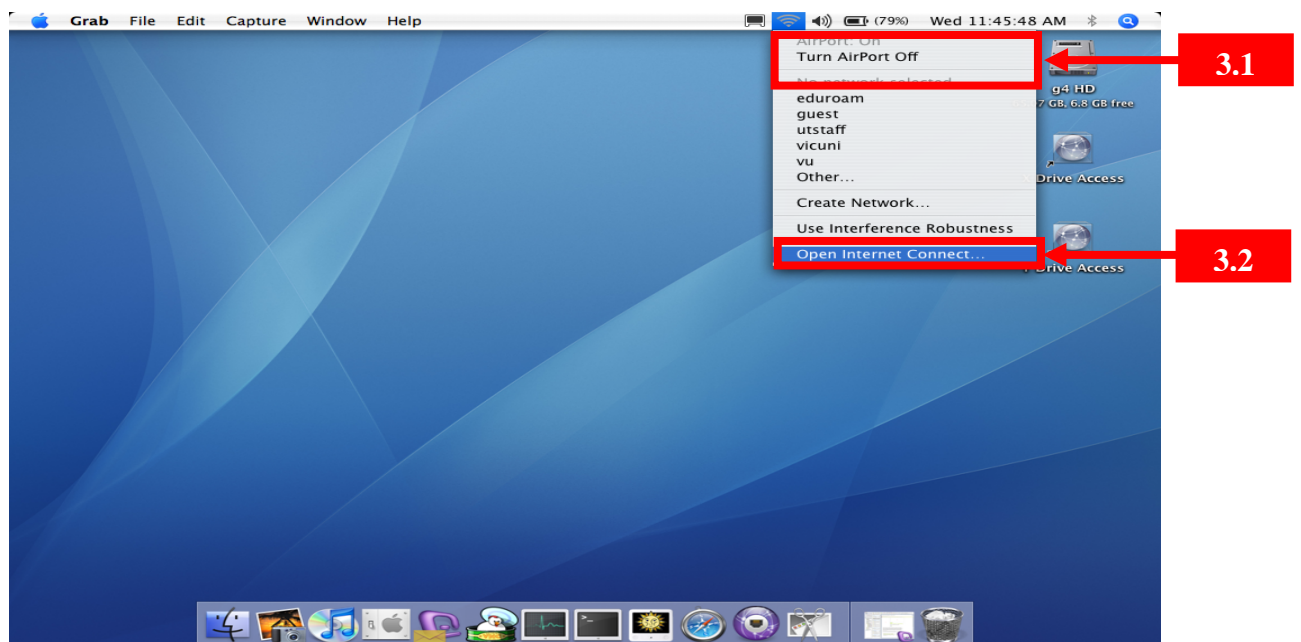
To connect to VicUni your computer must have:

- ◆ Mac OS X 10.3.3 -10.3.9 or Mac OS X 10.4.2 and above.
- ◆ Airport 4.2 software - available from [www.apple.com/support/downloads](http://www.apple.com/support/downloads)
- ◆ AirPort Extreme Card.

## 3. Setting up VicUni Wireless Network

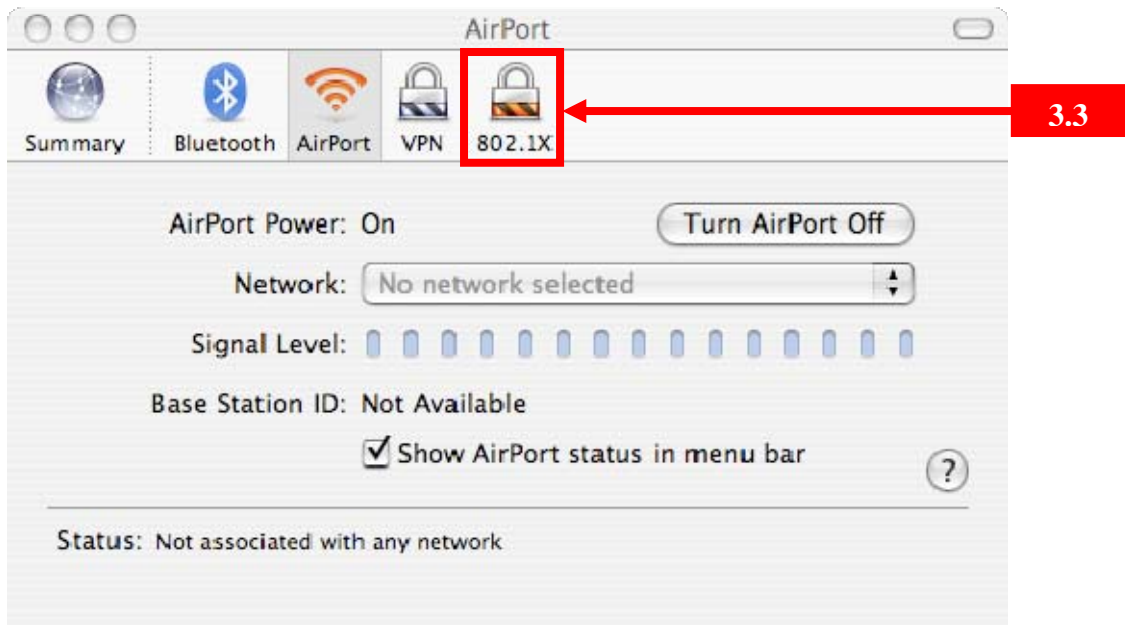
Start up the **Airport** Application

- 3.1. Ensure Airport is turned on, if not turn it on
- 3.2. Click on the Airport icon located at the top right hand corner of the menu bar and select **Open Internet Connect**

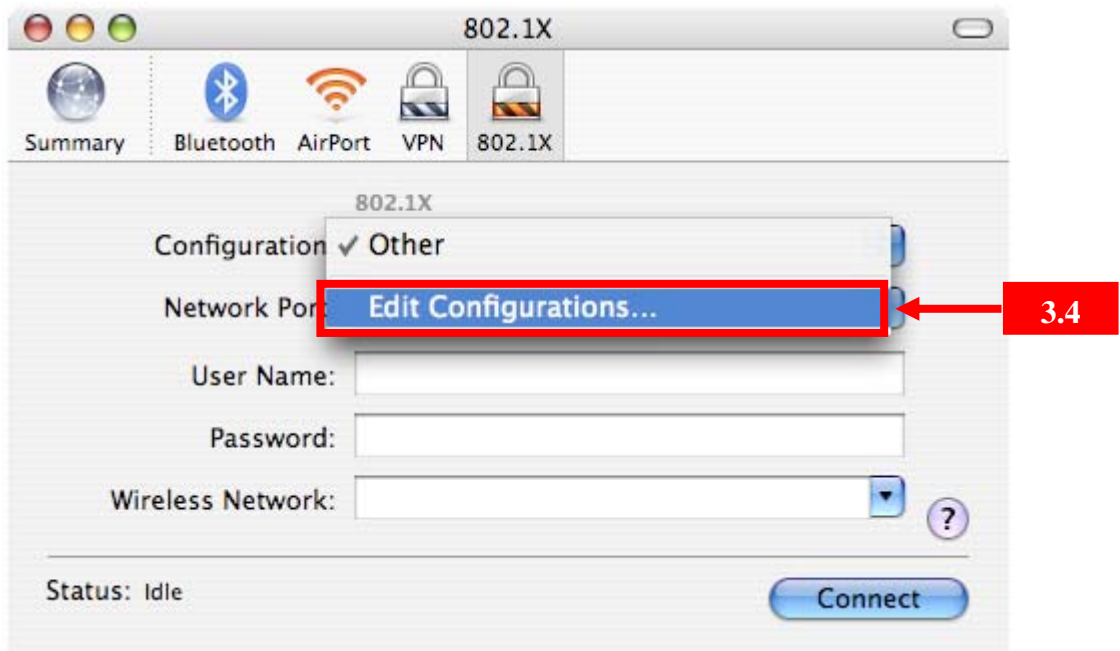


- 3.3. To create a new **VicUni** connection, Click on the **802.1X** tab.

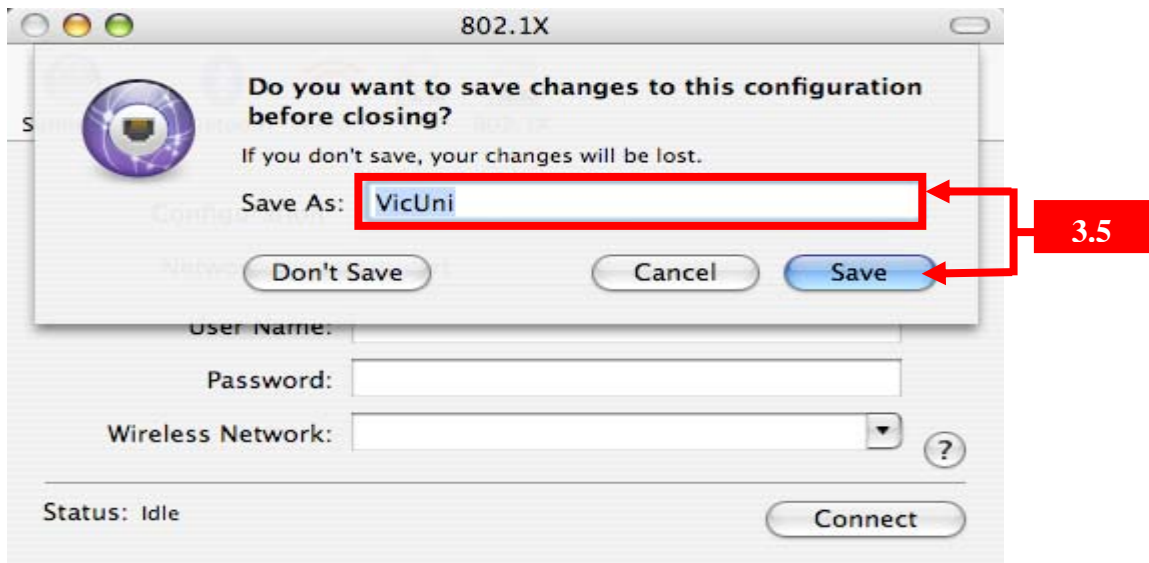
Note that if the 802.1X icon is not present in the Airport window, click on **File**, then **New 802.1X Connection** from the Internet Connect menu.



- 3.4. Under the **Configuration** drop down menu, click on **Edit Configurations....**



- 3.5. In the **Save As** field, type in **VicUni** and Click on Save. This will save your profile as **VicUni**



- 3.6. Enter your AD **username** and **password** in the relevant fields, and click **OK**

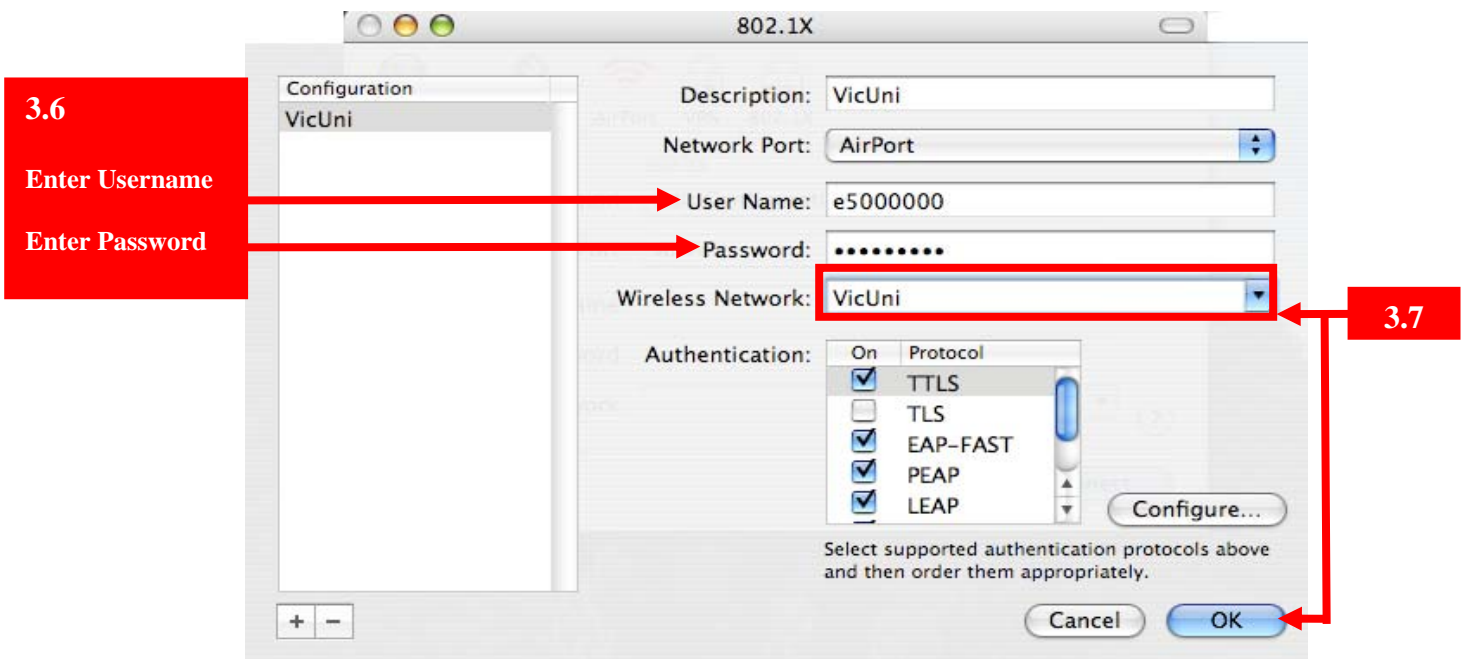
For staff – your AD username is your staff number preceded with an **e**.

For example, **e5000000**

For Students – your AD username is your student number preceded with an **s**.

For example, **s3000000**

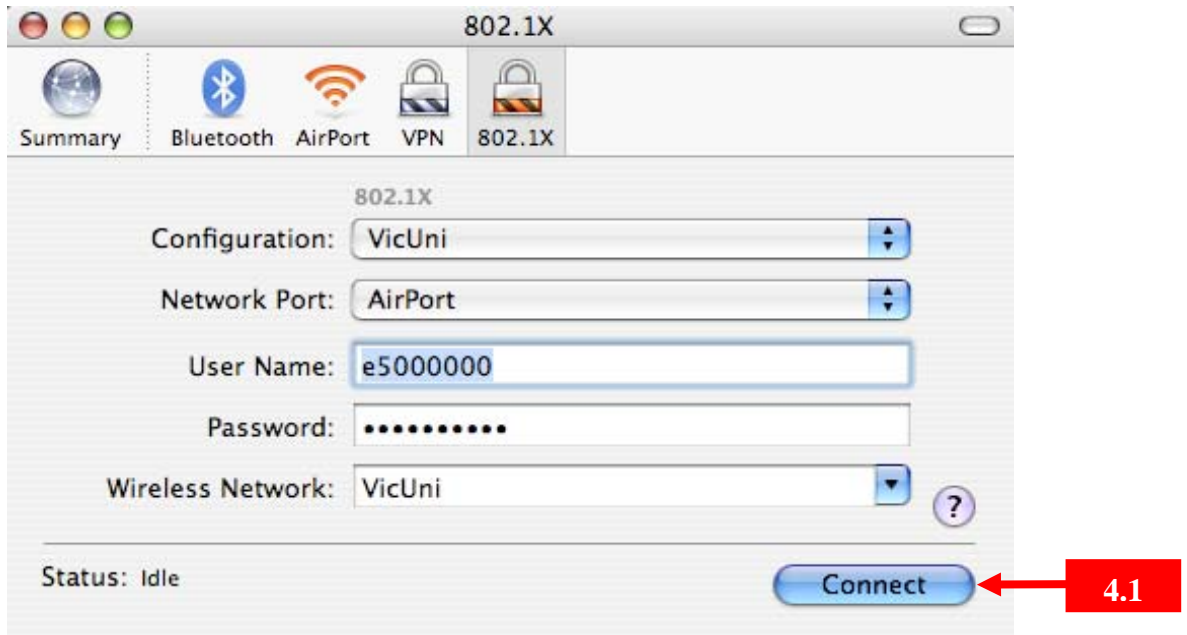
- 3.7. Under the **Wireless Network**, enter **VicUni**, then click **OK**



- 3.8. Leave the default settings for the **Authentication Protocol** options

## 4. Connecting to the VicUni Wireless network for the first time

- 4.1. To Connect to the **VicUni** Wireless Network, click **Connect** at the 802.1x window



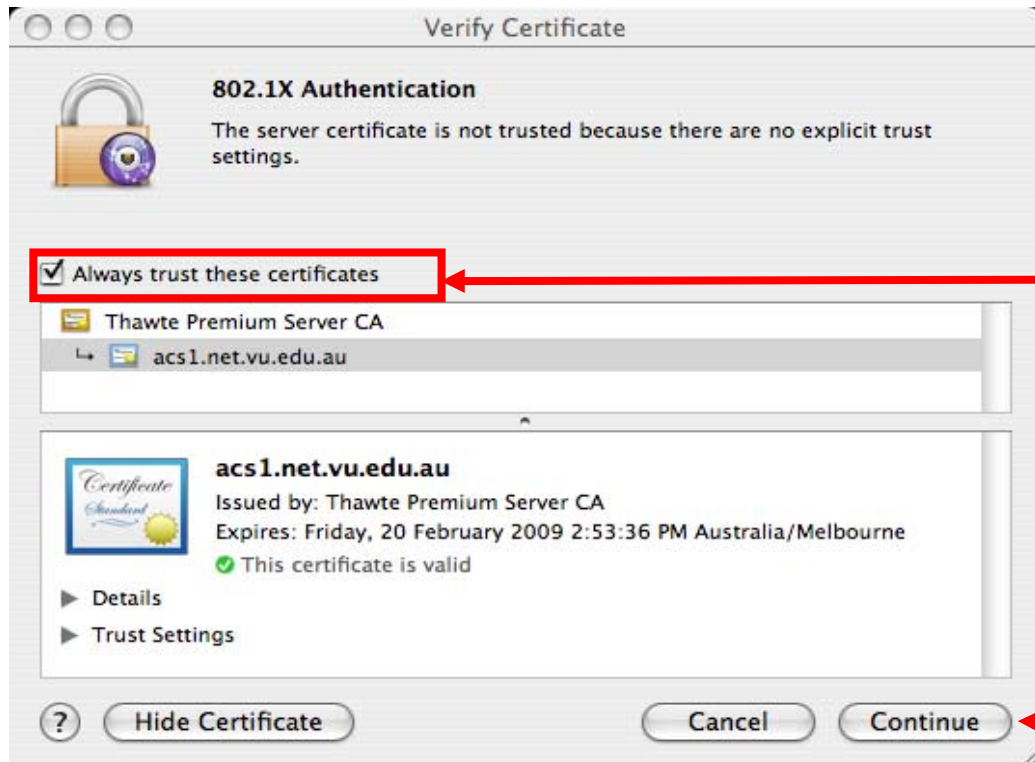
- 4.2. When the **Confirm Access to Keychain** appears, click **Always Allow**



- 4.3. When the **Verify Certificate Screen** appears, click **Show Certificate**



#### 4.4. Click on the **Always trust these certificates** check box, and click **Continue**



## 5. Confirmation of successful connection

If you have successfully connected to the VicUni network, the **Status** section of the 802.1x window will display your connection and connection time

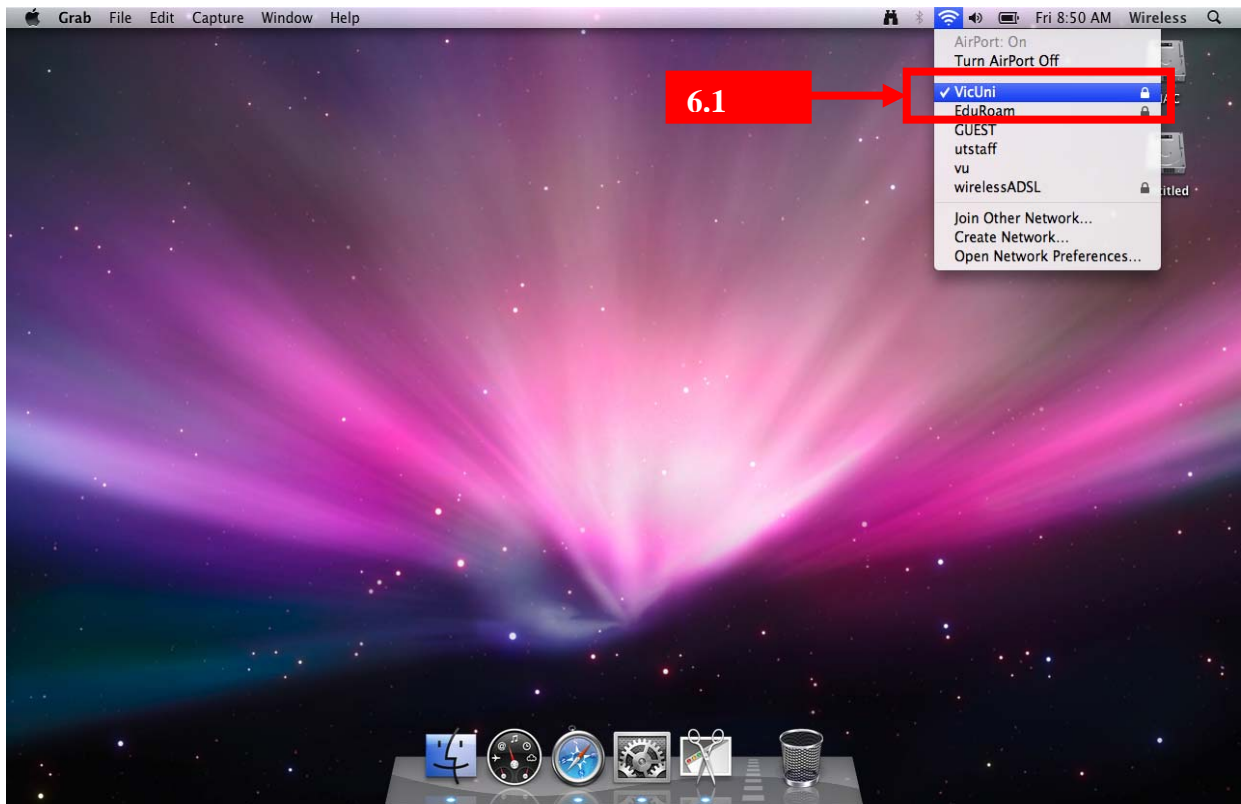


- ◆ You are now ready to commence using the wireless network!
- ◆ This concludes the procedure on how to connect to the VicUni wireless network. You should be able to access the internet.
- ◆ If you are unable to connect to the VicUni wireless network, please repeat steps 3.1 – 4.4

## 6. Reconnecting to VicUni Wireless Network

To connect to the VicUni Wireless network after the first successful attempt:

6.1. Click on the Airport icon located at the top right hand corner of the menu bar and select **VicUni**



6.2. You will not be prompted to enter any other details. The system will attempt to automatically connect you to the VicUni wireless network using your previous login details

## 7. Helpful hints

- ◆ To disconnect from the Vicuni wireless network, click on the **Disconnect** button at the bottom of the 802.1x screen.
- ◆ Configure your VicUni connection before you try to connect and use the Vicuni wireless network for the first time.
- ◆ You must be within range of a participating University's wireless network in order to set up or connect to VicUi.