

How to connect to VicUni Wireless Networks

MAC OS X.5

The following documentation illustrates the procedure on how to connect to the Vicuni wireless network for a MAC OS platform.

The documentation will highlight and demonstrate the following in order to access the Vicuni wireless network:

1. What is VicUni wireless network?
2. What do you need to use VicUni wireless network?
3. Setting up VicUni Wireless network
4. Connecting to the VicUni Wireless network for the first time
5. Confirmation of successful completion
6. Connecting to the VicUni Wireless network
7. Helpful hints

1. What is Vicuni?

VicUni is a wireless network service providing all VU staff and students with valid AD login credentials to be able to connect to VU's networking resources, such as the Internet and Email.

VicUni wireless network is available at the following campuses:

St Albans
Sunshine
Werribee
Melton
City Flinders St
City Flinders Lane
City King St
City Queen St
Footscray Nicholson
Footscray Park

2. What do you need to use VicUni?

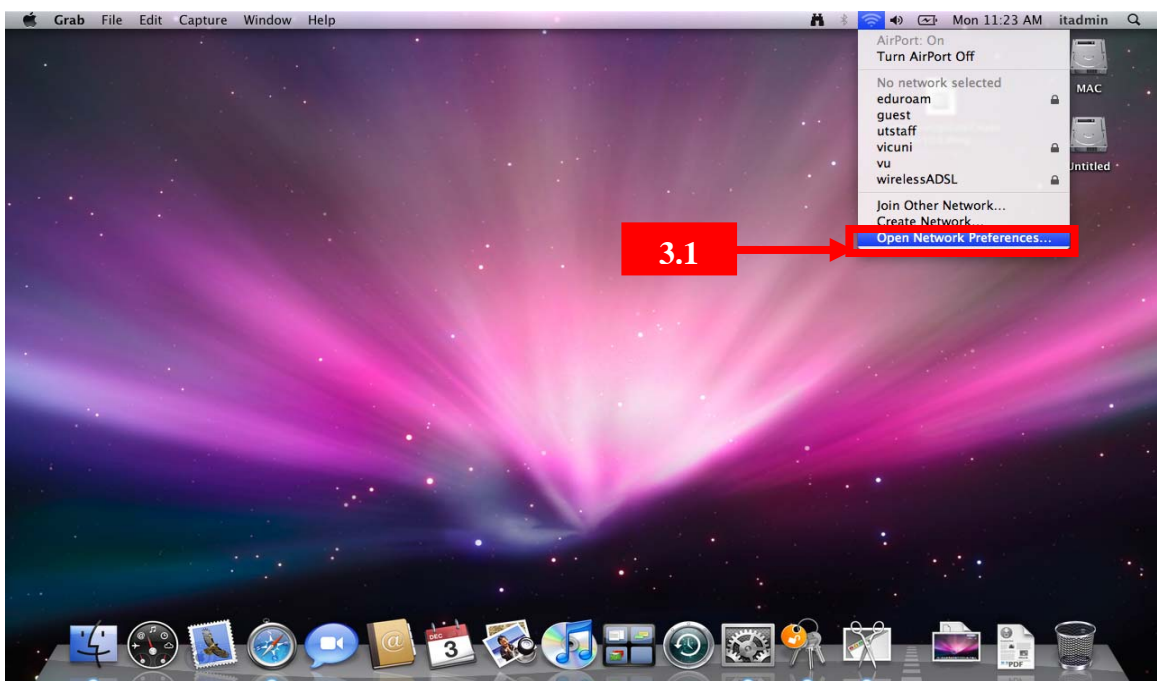
To connect to VicUni your computer must have:

- ◆ Mac OS X 10.5.1 and above.
- ◆ Airport 4.2 software - available from www.apple.com/support/downloads
- ◆ AirPort Extreme Card.

3. Setting up VicUni Wireless Network

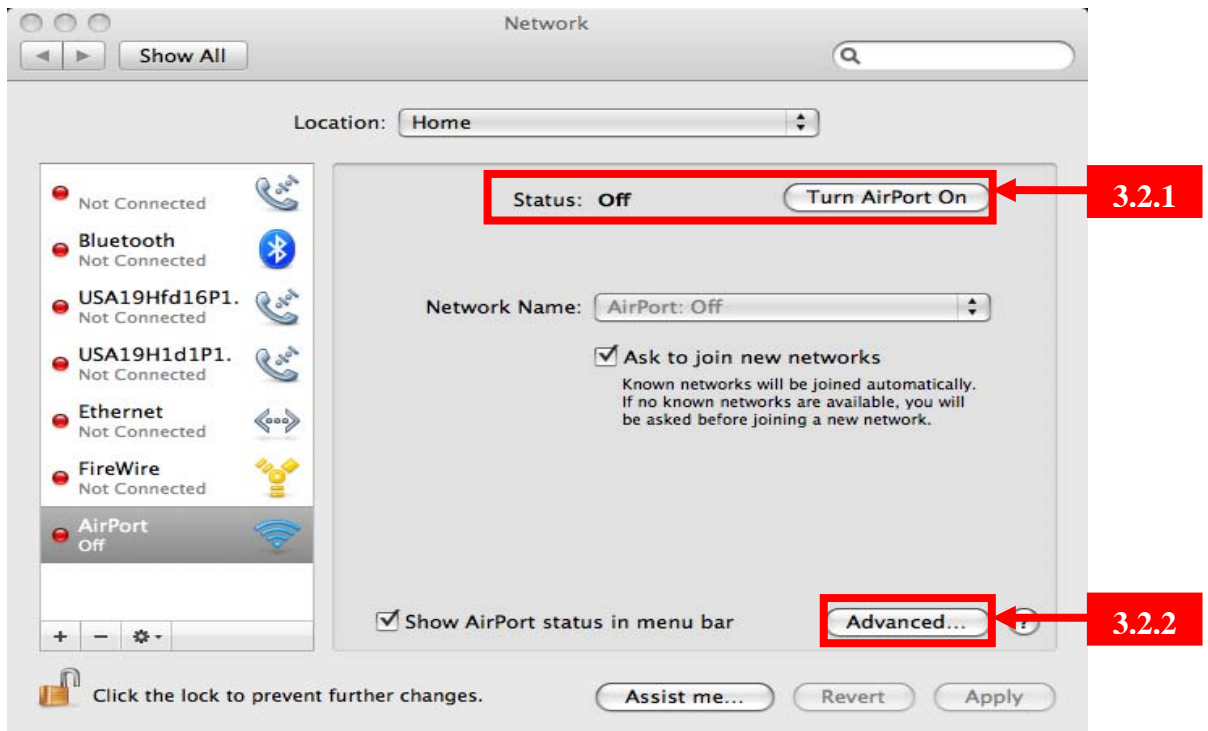
Start up the **Airport** Application

- 3.1 Click on the Airport icon located at the top right hand corner of the menu bar and select **Open Internet Connect**.

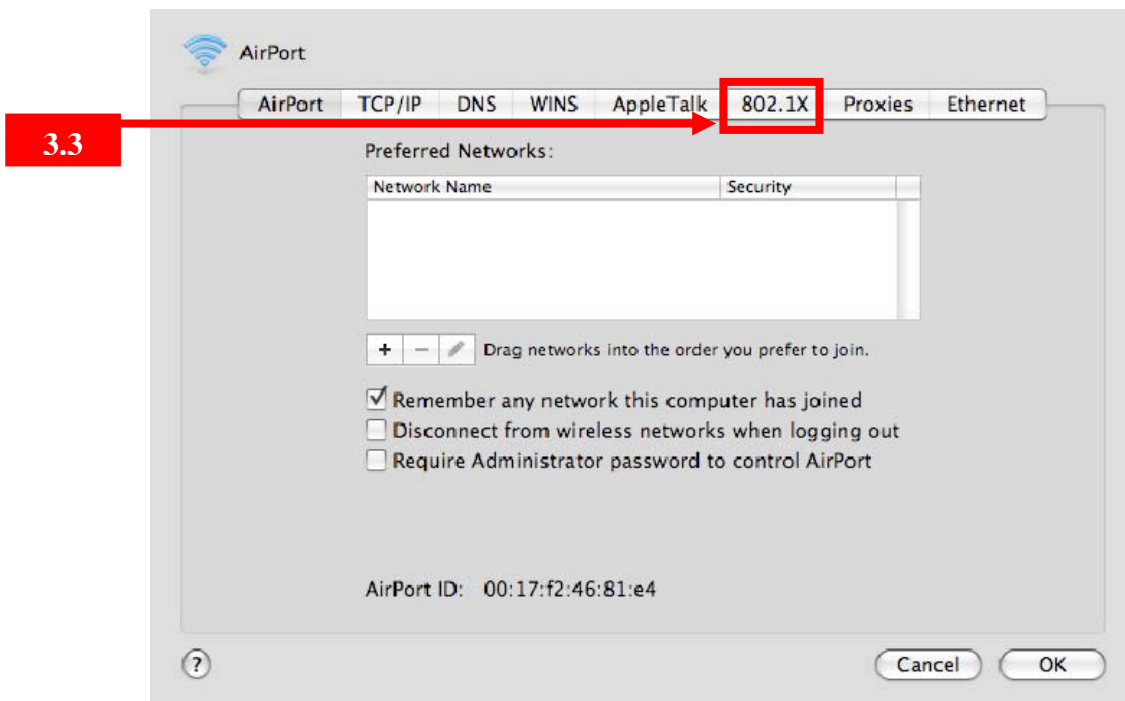


3.2.1. If the Airport is not turned on, click on the **Turn AirPort On** tab

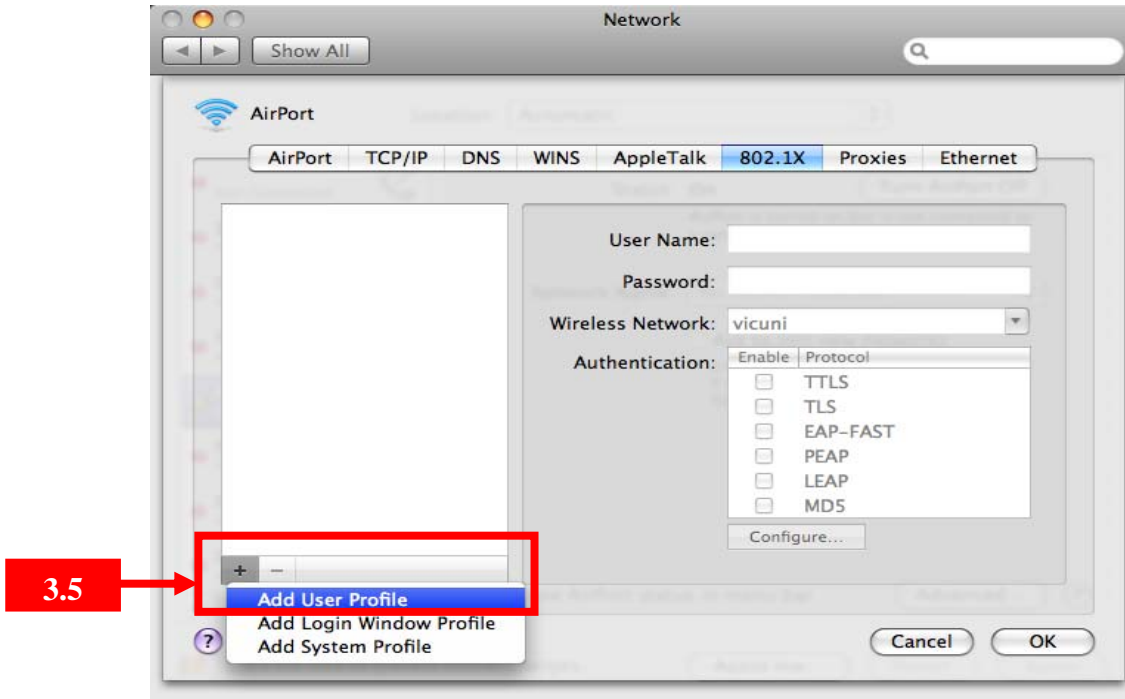
3.2.2. To create a new connection, Click on the **Advanced** tab



3.3. Click on the **802.1x** tab



3.4. Click the **+** and then **Add User Profile**



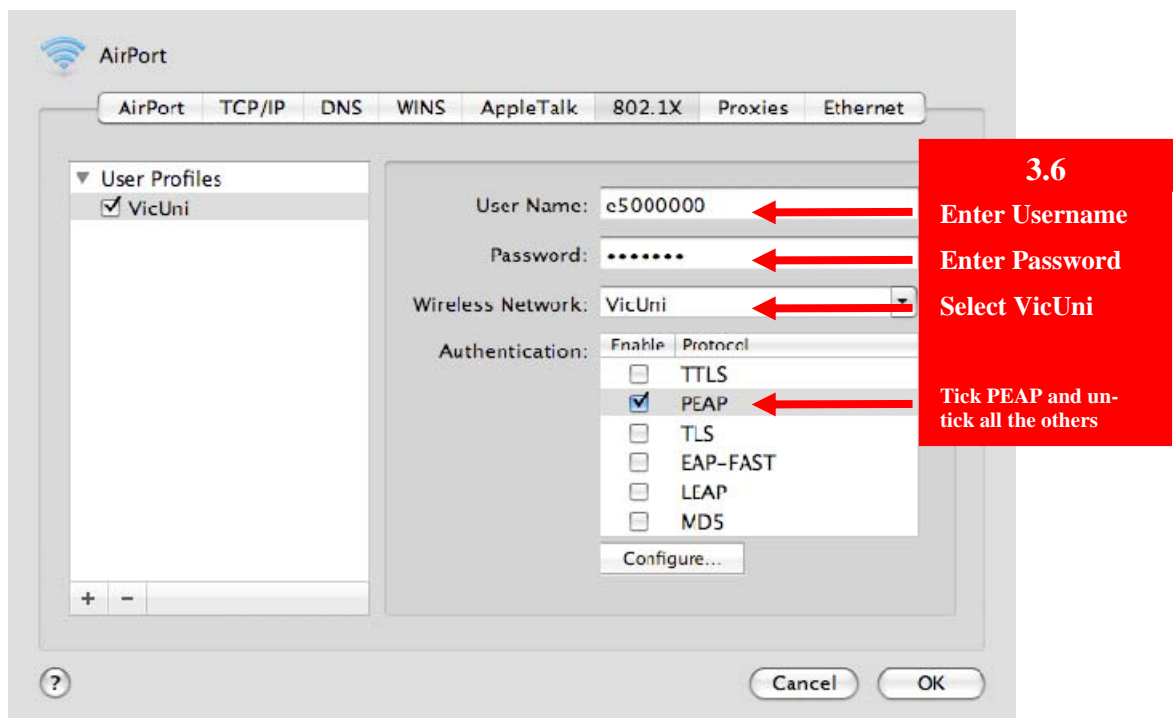
3.5. Enter your AD **username** and **password** in the relevant fields

For staff – your AD username is your staff number preceded with an **e**.

For example, **e5000000**

For Students – your AD username is your student number preceded with an **s**.

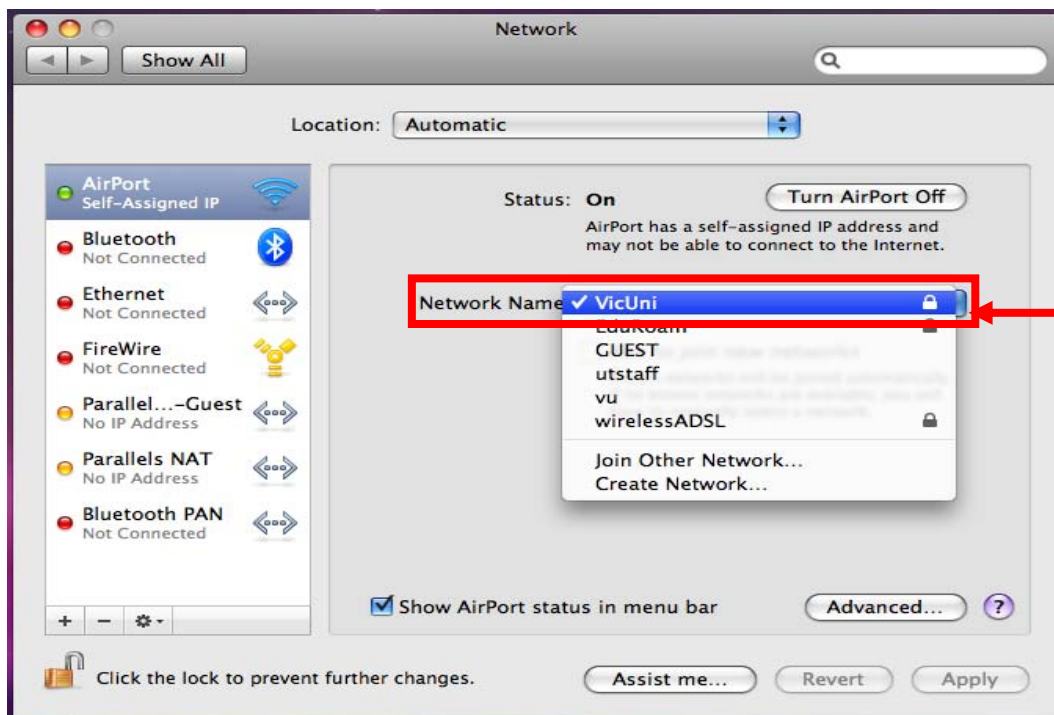
For example, **s3000000**



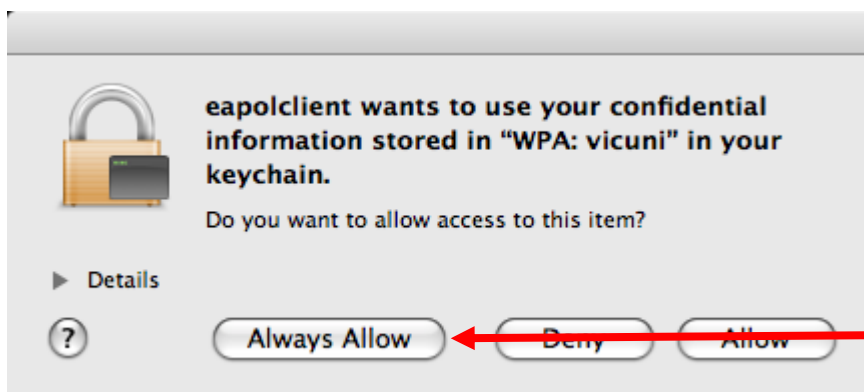
- 3.6. Select **VicUni** from the **Wireless Network** drop box.
- 3.7. Select the **PEAP** option and deselect the others.
- 3.8. Click **OK**

4. Connecting to the VicUni Wireless network for the first time

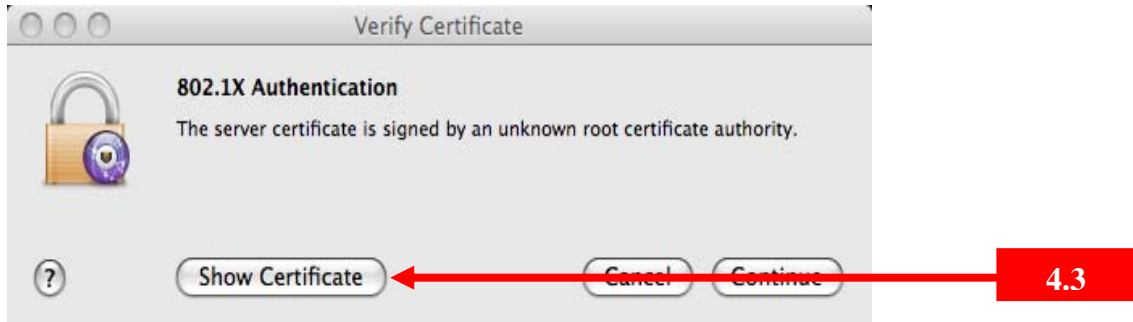
- 4.1. Click on the **Network Name** drop down list and select **VicUni**. If the system is idle (i.e. not doing anything), click on the **Turn AirPort Off**, and turn it back on by clicking on **Turn AirPort On**. Enter your username and password if prompted



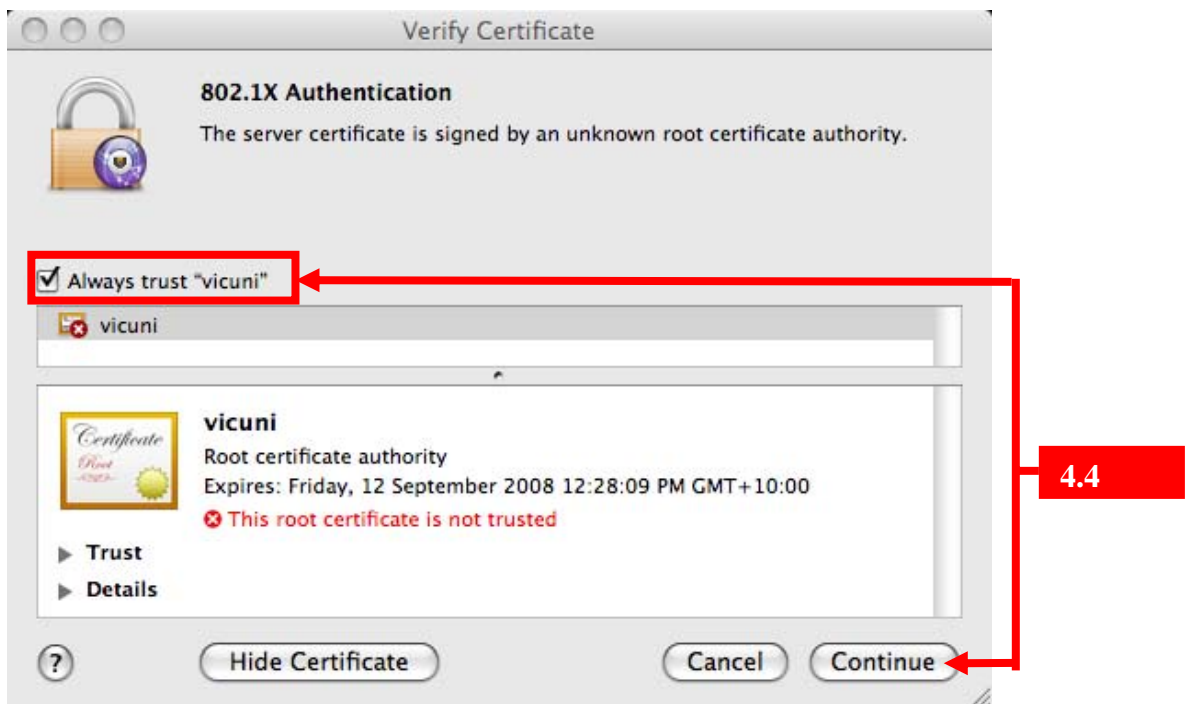
- 4.2. When the **Keychain Request Screen** appears, click **Always Allow**



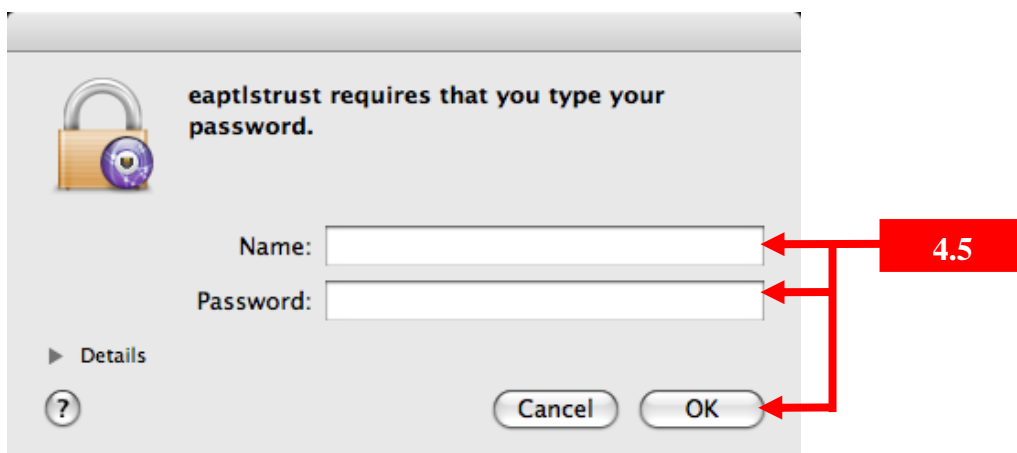
- 4.3. When the **Verify Certificate Screen** appears, click **Show Certificate**



- 4.4. Click on the **Always trust "VicUni"** check box, and click **Continue**



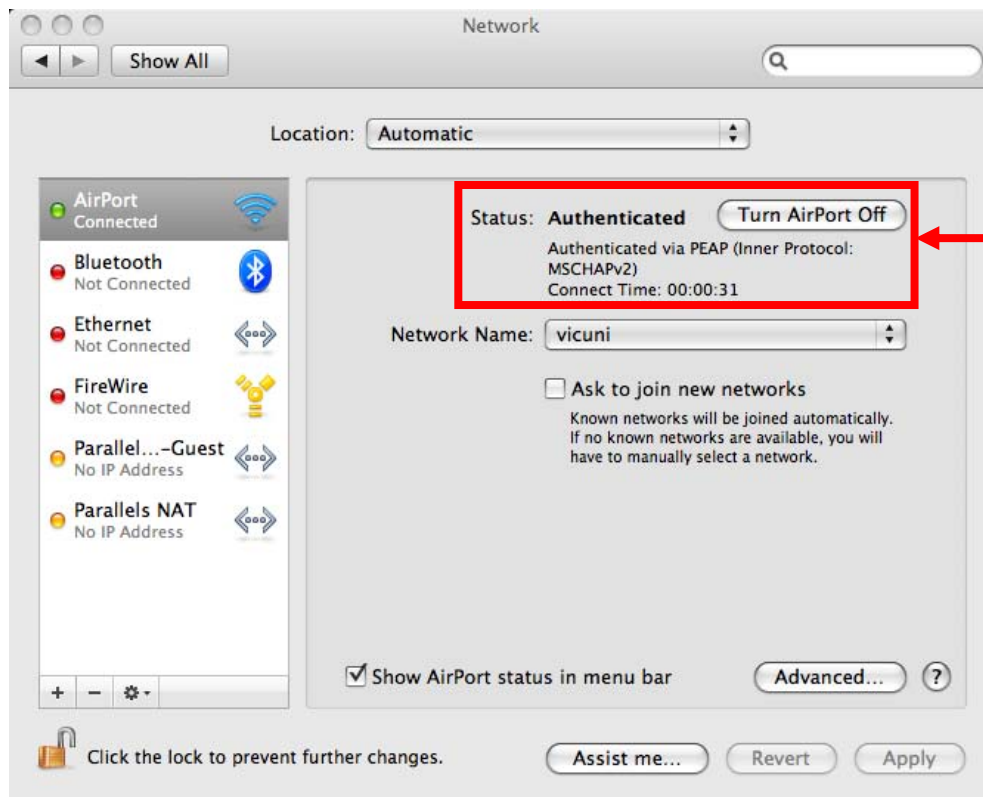
- 4.5. Enter your computer **Administrator Name and Password** (this is the username and password to log into your computer) and click **OK**



- 4.6. The system will now attempt to authenticate you to the VicUni wireless network. This authentication process may take up to 3 minutes

5. Confirmation of successful connection

If you have successfully connected to the VicUni network, the **Status** section will display **Authenticated** and a connection time

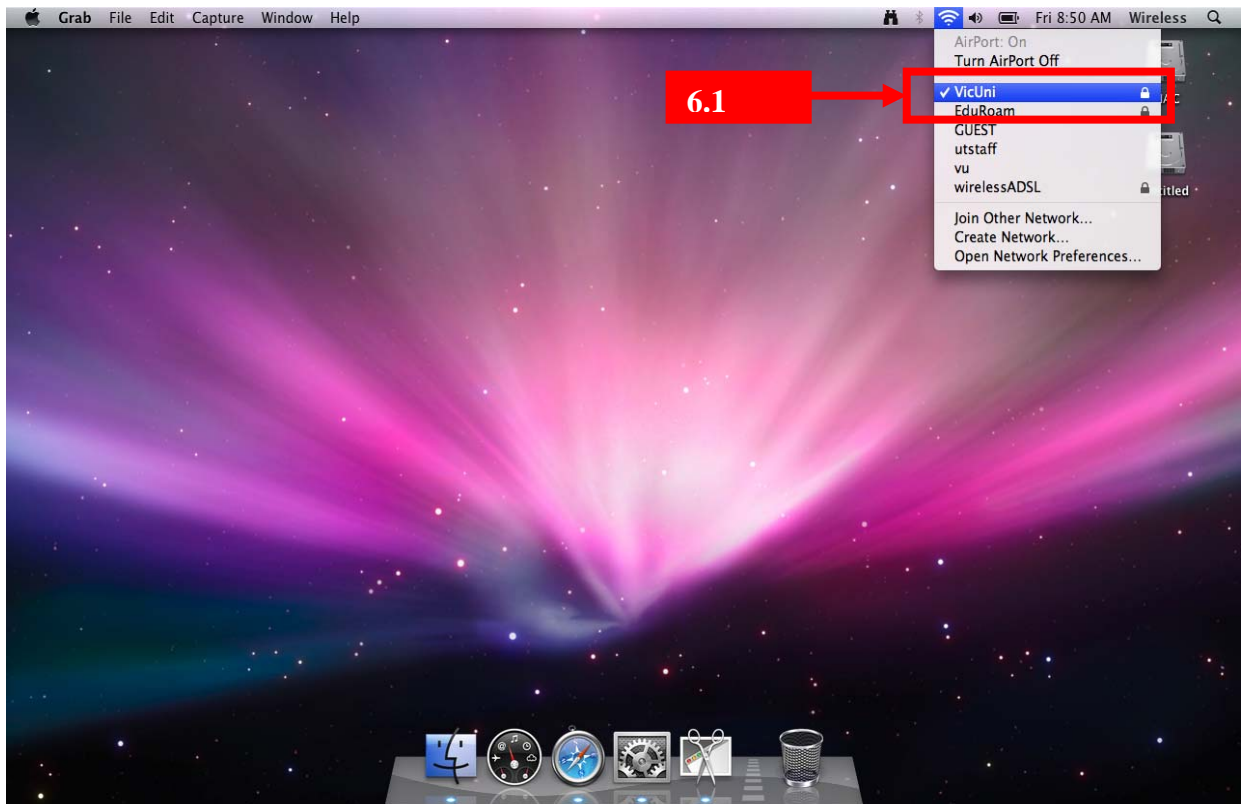


- ◆ You are now ready to commence using the wireless network!
- ◆ This concludes the procedure on how to connect to the VicUni wireless network. You should be able to access the internet.
- ◆ If you are unable to connect to the VicUni wireless network, please repeat steps 3.1 – 4.6.

6. Reconnecting to VicUni Wireless Network

To connect to the VicUni Wireless network after the first successful attempt:

6.1. Click on the Airport icon located at the top right hand corner of the menu bar and select **VicUni**



6.2. You will not be prompted to enter any other details. The system will attempt to automatically connect you to the VicUni wireless network using your previous login details

7.0 Helpful hints

- ◆ To disconnect from the VicUni wireless network, click on the **Disconnect** button at the bottom of the 802.1x screen.
- ◆ Configure your VicUni connection before you try to connect and use the VicUni wireless network for the first time.
- ◆ You must be within range of Victoria University's wireless network to be able to set up or connect to VicUni.