

ACADEMIC STAFF POSITION DESCRIPTION



VICTORIA
UNIVERSITY

A NEW
SCHOOL OF
THOUGHT

POSITION TITLE:	Lecturer – Physical Education and Health		
POSITION NUMBER:	A00351		
FACULTY / SCHOOL / DEPARTMENT:	Faculty of Arts, Education and Human Development / School of Sport and Exercise Science		
LOCATION/CAMPUS:	Footscray Park and Melton Campus		
CLASSIFICATION:	Level A		
SUPERVISOR:	Head of School, Sport and Exercise Science	Associate Professor Dennis Hemphill	27/10/09
INCUMBENT:	Vacant		
APPROVED BY:	Executive Dean, Faculty of Arts, Education and Human Development	Professor Michael-Hamel Green	27/10/09

OVERALL PURPOSE

The Lecturer- Physical Education and Health will contribute to the professional preparation of physical education and health teachers at the secondary and primary school levels. Lecturing will be into the Bachelor of Applied Science – Physical Education (Secondary), as well as in the Physical Education and the Health specialist streams in the Bachelor of Education. The use of flexible delivery, learning in the workplace and community, and community engagement will be important features of teaching. Scholarship of teaching and learning, as well as research, would be expected to occur in collaboration, or integrated with existing physical education and health strengths within the School. Program leadership, research publications, grant applications, and supervision of postgraduate students will be encouraged and supported.

ORGANISATIONAL ENVIRONMENT

Victoria University is a multi-sector University combining substantial activity in three (3) faculties in Higher Education, two (2) in Vocational Education and Victoria University College. The University has over 45,000 students, including more than 2,500 international students on-shore, over 4,000 off-shore, and a workforce of approximately 3,500 staff. The University currently offers courses at Postgraduate and Undergraduate degree, Advanced Diploma, Diploma and Certificate levels, and non-award courses. There are several affiliated institutions in Melbourne's western region. Campuses of the University are located at Footscray Nicholson, Footscray Park, Melton, Newport, St Albans, Sunbury, Sunshine and Werribee as well as prominent locations in the Melbourne Central Business District (City Flinders, King and Queen Street).



The University has embarked on a major repositioning of its core teaching and research activities to ensure closer alignment to the changing needs of students, enterprises and communities. With its commitment to “Making Victoria University (VU) a New School of Thought”, the University is implementing the “Making VU” project over the period 2007 to 2012.

The success of this project will be demonstrated through:

- Victoria University graduates being preferred by employers and return to VU for further studies.
- Victoria University services being preferred by communities, enterprises, governments and public.
- Local and international recognition of VU as a distinctive and engaged university.

The Faculty of Arts, Education and Human Development has four Schools: Communication and the Arts; Education; Sport and Exercise Science; and Social Sciences and Psychology. The Faculty currently offers courses at Postgraduate and Degree levels, together with non-award courses, with campus locations at St Albans, Footscray Park, Melton and Sunbury. Off-shore course activity is located in Vietnam, Thailand, Hong Kong, Malaysia, Singapore, People’s Republic of China and Pakistan.

The School of Sport and Exercise Science (formerly Human Movement, Recreation and Performance) has established a national and international reputation for excellence in education, scholarship and research over thirty-five years. The School has approximately 1000 undergraduate and postgraduate students, including 40 research students, and approximately 55 full-time ongoing academic staff and 80 part-time staff. The School also has an international profile via off-shore graduate programs, exchange programs, a substantial intake of international students into onshore courses, and links with several international universities.

The School of Sport and Exercise Science offers a range of courses from undergraduate degree level to Doctoral level. The School boasts research and teaching expertise in a wide range of disciplines and professional applications including: health, physical education, adapted physical education, sport and exercise psychology, sport and recreation sociology, sport and recreation management, philosophy/ethics, motor learning, motor control, history, exercise physiology, exercise rehabilitation, human movement, and biomechanics.

In the areas of physical education and health, the School offers a three-year Bachelor of Applied Science – Physical Education (Secondary) course, which prepares graduates for entry into a Graduate Diploma in Secondary Education. The School also conducts the Physical Education specialist and the Health specialist streams in the Bachelor of Education. These programs include disciplinary and professional studies that are guided by standards set by the Victorian Institute of Teaching, the Victorian Curriculum and Assessment Authority, and the Australian Council for Health, Physical Education and Recreation.

The School works closely with Maribyrnong College, Footscray Secondary College, Essendon-Keilor College, as well as other secondary/primary schools, special schools, and community organisation in the western metropolitan region. These relationships create outstanding opportunities for learning in the workplace and community activities for students and to promote physical activity and health in the West.

Research and education in sport, physical education and exercise science in the School will be greatly strengthened by a new building containing \$30M world-class, multi-disciplinary Exercise Science and

Sport laboratory facilities, to be completed at the Footscray Park campus over the next two years. These include laboratories for exercise physiology, exercise biochemistry & molecular biology, biomechanics, motor learning and skilled performance, motor control, psychology biofeedback, body composition, environmental physiology, as well as electronic and mechanical workshops. In addition, a major new multi-million dollar sport and exercise applied research and education centre will be established at the recently redeveloped Whitten Oval.

The School of Sport and Exercise Science and its staff have very strong links with the Centre for Ageing, Rehabilitation, Exercise and Sport (CARES), a University Research Centre that will soon be upgraded to an Institute that will focus strongly on sport, exercise and active living.

The operations of the School of Sport and Exercise Science and this position are currently located at the Footscray Park and Melton campuses of the University, though this position maybe relocated to any other existing or future campus. On occasion the incumbent may also be expected to travel to other campuses.

An Organisational Chart is attached.

MAJOR CHALLENGES / FREEDOM TO ACT

This position reports to and receives broad direction from the Head of School and operates within the University policies, procedures and guidelines.

The University is a progressive and rapidly developing organisation. Consequently, the incumbent will need to be able to work effectively in a changing and sometimes uncertain environment, and to respond to change with creativity, resourcefulness and initiative.

The incumbent is expected to assist the School of Sport and Exercise Science to reach and maintain stated goals and objectives in support of the overall strategic plans of the Faculty of Arts, Education and Human Development, and Victoria University.

A key challenge of the position will be to assist in school core activities across a range of academic responsibilities including teaching, research, course and unit coordination, research training supervision and strategic planning.

PRIMARY RESPONSIBILITIES

General Standard

A level A academic is expected to make contributions to the teaching effort of the University, particularly at undergraduate and graduate diploma level, and to carry out activities to develop his/her scholarly, research and/or professional expertise relevant to the profession or discipline.

A Level A academic shall work with support and direction from more senior academic staff and with an increasing degree of autonomy as the academic gains in skills and experience.

Specific duties:

In performing the following duties the incumbent is required to comply with quality assurance policies and procedures, and other relevant legislative requirements applicable to the University.

1. The preparation and delivery of lectures and seminars in core and elective units in the Physical Education course and Physical Education/Health specialist streams. This includes conduct of lectures, tutorials, practical classes, demonstrations, workshops, as well as marking and assessment and production of teaching materials.
2. Coordinate, develop and evaluate physical education and health units.
3. Assist in the development and implementation of the use of flexible modes of delivery and learning in the workplace and community.
4. Consult with and provide feedback and support to students.
5. Contribute to operations of the Physical Education Unit. This includes participation in administrative and collegial functions within the context of School, Faculty and/or the University and attendance at school and/or faculty meetings and/or membership of a limited number of Committees.
6. Develop professional relationships with other sport, education and health related organisations and relevant professional bodies for the physical education profession. This may include, but not be restricted to, the Australian Council for Health, Physical Education and Recreation, Athletics Victoria, Life Saving Victoria.
7. Working with and/or assisting other more senior academics, conduct research and scholarly activity in the field of physical education and health evidenced by continuing publications in refereed journals, books and conferences, and the preparation and submission of grant applications for research funding.
8. Contribute to the development and delivery of any future programs offered by the School of Sport and Exercise Science
9. Adhere to and cooperate with all OHS policies and procedures of the University.

SELECTION CRITERIA**Essential**

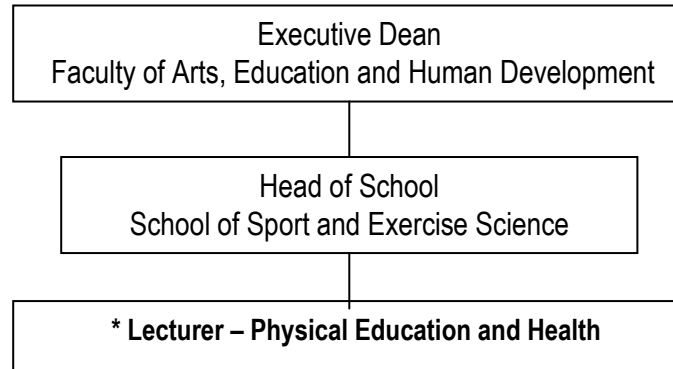
1. Evidence of completion of undergraduate degree and enrolment in PhD or professional Doctorate
2. Evidence of ability to coordinate and deliver a range of tertiary level units of study related to the preparation of secondary level teachers and primary level physical education and health specialist teachers, including but not restricted to childhood and adolescent human development, sport and fitness education, nutrition and diet, health education and promotion, human sexuality and society.

3. Evidence of strong potential for the development of an outstanding teaching record.
4. Evidence of strong potential for engagement, leadership, consultancy, and service with professional bodies, industries and community organisations.
5. Evidence of commitment to continued professional development.
6. Evidence of scholarly and/or research contributions to the profession.
7. Demonstrated capacity to work collaboratively in teaching, community engagement, and research.
8. Excellent oral and written communication skills.
9. Capacity to evaluate one's teaching, engagement and research performance.
10. A satisfactory Police Record Check and Working with Children Check
11. Willingness to commit to Victoria University's values which are:
 - knowledge and skills, and critical and imaginative inquiry for their capacity to transform individuals and the community;
 - equality of opportunity for students and staff;
 - diversity for its contribution to creativity and the enrichment of life;
 - co-operation as the basis of engagement with local and international communities;
 - integrity, respect and transparency in personal and collaborative action; and
 - the pursuit of excellence in everything we do.

Desirable

1. Demonstrated capacity to teach sport activities such as aquatics, athletics, and gymnastics.
2. Demonstrated capacity to use flexible modes of delivery to facilitate successful learning outcomes
3. Demonstrated capacity to design and implement learning in the workplace and community programs

ORGANISATIONAL CHART



* Denotes position