

ACADEMIC STAFF POSITION DESCRIPTION



**VICTORIA
UNIVERSITY**

**A NEW
SCHOOL OF
THOUGHT**

POSITION TITLE:	Senior Lecturer - Musculoskeletal and Occupational Rehabilitation		
POSITION NUMBER:	A00352		
FACULTY / SCHOOL / DEPARTMENT:	Faculty of Arts, Education and Human Development / School of Sport and Exercise Science (SES)		
LOCATION/CAMPUS:	Footscray Park		
CLASSIFICATION:	Level C		
SUPERVISOR:	Head of School, School of Sport and Exercise Science	Assoc Prof Dennis Hemphill	27/10/09
INCUMBENT:			
APPROVED BY:	Executive Dean, Faculty of Arts, Education and Human Development	Professor Michael Hamel-Green	27/10/09

OVERALL PURPOSE

The Senior Lecturer - Musculoskeletal and Occupational Rehabilitation will teach within the Clinical Exercise Science and Practice CESP programs at the undergraduate and postgraduate levels, with a focus on musculoskeletal and occupational injuries and illnesses,. The successful applicant will be expected to undertake a major program coordination and leadership role in the undergraduate Clinical Exercise Science stream and in the Graduate Diploma in Clinical Exercise Practice. The use and promotion of flexible delivery and teaching in the workplace and community is an important feature of the position.

Research would be expected to occur in collaboration, or integrated with existing CESP and related discipline strengths (eg exercise physiology) within SES and the Faculty's Centre for Ageing, Rehabilitation, Exercise and Sport (CARES). Supervision of postgraduate students, research publications and external grant applications and successes are expected.

ORGANISATIONAL ENVIRONMENT

Victoria University is a multi-sector University combining substantial activity in three faculties in Higher Education, two in Vocational Education and Victoria University College. The University has over 45,000 students, including more than 2,500 international students on-shore, over 4,000 off-shore, and a workforce of approximately 3,500 staff. The University currently offers courses at Postgraduate and Undergraduate degree, Advanced Diploma, Diploma and Certificate levels, and non-award courses. There are several affiliated institutions in Melbourne's western region. Campuses of the University are

located at Footscray Nicholson, Footscray Park, Melton, Newport, St Albans, Sunbury, Sunshine and Werribee as well as prominent locations in the Melbourne Central Business District (City Flinders, King and Queen Street).

The University has embarked on a major repositioning of its core teaching and research activities to ensure closer alignment to the changing needs of students, enterprises and communities. With its commitment to “Making Victoria University (VU) a New School of Thought”, the University is implementing the “Making VU” project over the period 2007 to 2012.

The success of this project will be demonstrated through:

- Victoria University graduates being preferred by employers and return to VU for further studies.
- Victoria University services being preferred by communities, enterprises, governments and public.
- Local and international recognition of VU as a distinctive and engaged university.

The Faculty of Arts, Education and Human Development has four Schools: Communication and the Arts; Education; Sport and Exercise Science; and Social Sciences and Psychology. The Faculty currently offers courses at Postgraduate and Degree levels, together with non-award courses, with campus locations at St Albans, Footscray Park, Melton and Sunbury. Off-shore course activity is located in Vietnam, Thailand, Hong Kong, Malaysia, Singapore, People’s Republic of China and Pakistan.

The School of Sport and Exercise Science has 55 full-time academic, technical and administrative staff and boasts research and teaching expertise in a wide range of disciplines and professional applications including: health, sport and exercise psychology, sport and recreation sociology, sports administration, philosophy/ethics, motor learning, motor control, sport history, exercise physiology, exercise rehabilitation, human movement, sport and recreation management, and biomechanics.

The School of Sport and Exercise Science is a leading Australian provider of education and research in Clinical Exercise Science and Practice, with established teaching and research strengths in the discipline of exercise rehabilitation. The School offers a range of courses from undergraduate degree level to Doctoral level. In particular, the School offers a three-year undergraduate specialization in Clinical Exercise Science and Practice, followed by a one-year Graduate Diploma in Clinical Exercise Practice. The School also offers well established postgraduate courses, comprising the Master of Applied Science – Exercise Rehabilitation, the Master of Applied Science – Clinical Exercise Practice, the Graduate Diploma in Exercise Science, and the Graduate Diploma in Exercise for Rehabilitation. The School also has an international profile via off-shore graduate programs, exchange programs, a substantial intake of international students into onshore courses, and links with several international universities.

The University is currently undertaking a major development of Exercise Science and Sport Laboratories, in a new \$65m building at the Footscray Park campus. This will include laboratories for Exercise Physiology, Exercise Biochemistry & Molecular Biology, Biomechanics, Motor Control, Motor Learning & Skilled Performance, Sport Technology & Engineering and Sport Psychology. This development will create major research and educational programming opportunities in Exercise Science and Sport.

The School works closely and collaboratively with the Centre for Ageing, Rehabilitation, Exercise and Sport (CARES), one of the University’s major research centres. Research in CESP is conducted in this



designated University area of research strength.

The operations of the School of Sport and Exercise Science and this position are currently located at the Footscray Park campus of the University, though this position may be relocated to any other existing or future campus. The appointee will be expected to conduct some clinical teaching as part of VUER's learning in the workplace (LiWC) program, currently situated within the VUER Clinic located at the campus, and the soon-to-be-completed Teaching, Training and Research Facility (TTR) at the redeveloped Sunshine Hospital, in partnership with the University of Melbourne and Western Health. Some other clinical teaching may occur at hospitals, clinics and occupational rehabilitation settings outside of the main campus. On occasion the incumbent may also be expected to travel to other campuses.

An Organisational Chart is attached.

MAJOR CHALLENGES/FREEDOM TO ACT

This position reports to and receives broad direction from the Head of School and operates within the University policies, procedures and guidelines.

The University is a progressive and rapidly developing organisation operating in a local and international context. Consequently, the successful applicant will need to be able to work effectively in a changing and sometimes uncertain environment, and to respond to institutional change, as well as market forces and diverse international student cohorts, with creativity, resourcefulness, and initiative and cultural sensitivity.

A key challenge of the position will be to provide strong management and leadership across a range of academic responsibilities including teaching, research, stream / course and unit coordination, research training supervision and strategic planning. This requires initiative and willingness to assist the School of Sport and Exercise Science to reach and maintain stated goals and objectives in support of the overall strategic plans of the Faculty of Arts, Education and Human Development, and Victoria University.

The position will drive significant expansion in research in the area of Clinical Exercise Science and Practice, in addition to providing new opportunities for Learning in the Workplace and Community. The position requires that the successful applicant is able to balance his or her own teaching, research and service productivity with a major management and leadership role in the program.

The position may be involved in the work of CARES, most often with the School's postgraduate students working within CARES.

PRIMARY RESPONSIBILITIES

General Standard

A Level C academic will make a significant contribution to the discipline at the national level. In research and/or scholarship and/or teaching he or she will make original contributions, which expand knowledge or practice in their discipline. A Level C academic will normally make a significant contribution to research and/or scholarship and/or teaching and administration activities of an organisational unit or an

interdisciplinary area at undergraduate, honours and postgraduate level. He or she will normally play a major role or provide a significant degree of leadership in scholarly, research and/or professional activities relevant to the profession, discipline and/or community and may be required to perform the full academic responsibilities of and related administration for the coordination of a large award program or a number of smaller award programs of the institution.

Specific duties:

In performing the following duties the successful applicant is required to comply with quality assurance policies and procedures, and other relevant legislative requirements applicable to the University. Specific duties of a Level C academic may include :

1. Teach, as well as provide academic leadership, in study units in the area of musculoskeletal and occupational injuries and illnesses.
2. Coordinate, develop and evaluate study units within the Clinical Exercise Science and Practice (CESP) Stream
3. Develop and implement flexible modes of delivery and learning in the workplace and community opportunities.
4. Assessment marking, student advice and consultation.
5. Involvement and leadership in research and scholarly activity in the field of exercise rehabilitation, evidenced by continuing publications in refereed journals, books and conferences, and the preparation and submission of grant applications for external research funding.
6. Supervise student projects including Honours students and postgraduate research students.
7. Contribute to management of the Victoria University Exercise Rehabilitation (VUER) clinic
8. Contribute to the development of new courses in the field of CESP.
9. Contribute to the activities of the Exercise Rehabilitation Industry Advisory Committee (ERIAC) and attend and/or represent the School and Faculty in meetings or Committees
10. Develop/ manage links with industry, community, government and professional bodies
11. Undertake other duties commensurate with the classification of Senior Lecturer as directed by the Head of School
12. Adhere to and cooperate with all OHS policies and procedures of the University.

SELECTION CRITERIA LEVEL C**Essential:**

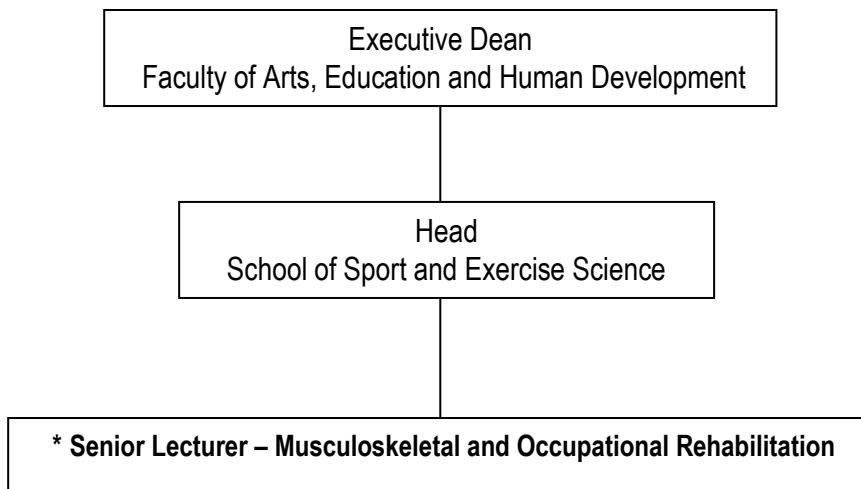
1. Doctoral qualification in Clinical Exercise Science and Practice, or related field

2. Strong research record in Clinical Exercise Science and Practice, including significant research outputs and research funding.
3. Demonstrated capacity as an academic leader in teaching
4. Strong teaching record in Clinical Exercise Science and Practice, or related field.
5. Demonstrated capacity to develop and sustain links with industry, community, government, and professional bodies.
6. Demonstrated experience and innovation in course and study unit coordination, assessment, and curricula development.
7. Capacity to evaluate one's own teaching and research performance
8. High level of computer and internet literacy.
9. Excellent oral and written communication skills
10. Awareness of OHS responsibilities and willingness to attend OHS training as required.
11. Willingness to commit to Victoria University's values which are:
 - knowledge and skills, and critical and imaginative inquiry for their capacity to transform individuals and the community;
 - equality of opportunity for students and staff;
 - diversity for its contribution to creativity and the enrichment of life;
 - co-operation as the basis of engagement with local and international communities;
 - integrity, respect and transparency in personal and collaborative action; and
 - the pursuit of excellence in everything we do.

Desirable:

1. Accreditation as an Accredited Exercise Physiologist (AEP), or registered / accredited as other relevant allied health professional
2. Demonstrated capacity to use flexible modes of delivery to facilitate successful learning outcomes
3. Demonstrated capacity to design and implement Learning in the Workplace and Community.

ORGANISATIONAL CHART



*Denotes the position