

ACADEMIC STAFF POSITION DESCRIPTION



**VICTORIA
UNIVERSITY**

**A NEW
SCHOOL OF
THOUGHT**

POSITION TITLE:	Lecturer – Sport Ethics		
POSITION NUMBER:	A00349		
FACULTY / SCHOOL / DEPARTMENT:	Faculty of Arts, Education and Human Development School of Sport and Exercise Science		
LOCATION/CAMPUS:	Footscray Park		
CLASSIFICATION:	Level A/B		
SUPERVISOR:	Head of School, School of Sport and Exercise Science	Associate Professor Dennis Hemphill	27/10/09
INCUMBENT:	Vacant		/ /
APPROVED BY:	Executive Dean, Faculty of Arts, Education and Human Development	Professor Michael Hamel-Green	27/10/09

OVERALL PURPOSE

The Lecturer – Sport Ethics will teach into the Exercise Science, Human Movement, Physical Education and Sport Management suite of courses. It is expected that the Lecturer will conduct and publish applied sport ethics/philosophy research, participate in applications for internal and external grants to support research and teaching, plus contribute to the supervision of research. The position is informed by a commitment to the development of reflective practitioners, sound research, and informed scholarly and public debate in sport, exercise science, physical education and sport management/policy.

ORGANISATIONAL ENVIRONMENT

Victoria University is a multi-sector University combining substantial activity in three (3) faculties in Higher Education, two (2) in Vocational Education and Victoria University College. The University has over 45,000 students, including more than 2,500 international students on-shore, over 4,000 off-shore, and a workforce of approximately 3,500 staff. The University currently offers courses at Postgraduate and Undergraduate degree, Advanced Diploma, Diploma and Certificate levels, and non-award courses. There are several affiliated institutions in Melbourne's western region. Campuses of the University are located at Footscray Nicholson, Footscray Park, Melton, Newport, St Albans, Sunbury, Sunshine and Werribee as well as prominent locations in the Melbourne Central Business District (City Flinders, King and Queen Street).

The University has embarked on a major repositioning of its core teaching and research activities to ensure closer alignment to the changing needs of students, enterprises and communities. With its commitment to "Making Victoria University (VU) a New School of Thought", the University is



implementing the “Making VU” project over the period 2007 to 2012.

The success of this project will be demonstrated through:

- Victoria University graduates being preferred by employers and return to VU for further studies.
- Victoria University services being preferred by communities, enterprises, governments and public.
- Local and international recognition of VU as a distinctive and engaged university.

The Faculty of Arts, Education and Human Development has four Schools: Communication and the Arts; Education; Sport and Exercise Science; and Social Sciences and Psychology. The Faculty currently offers courses at Postgraduate and Degree levels, together with non-award courses, with campus locations at St Albans, Footscray Park, Melton and Sunbury. Off-shore course activity is located in Vietnam, Thailand, Hong Kong, Malaysia, Singapore, People’s Republic of China and Pakistan.

The School of Sport and Exercise Science (formerly Human Movement, Recreation and Performance) has established a national and international reputation for excellence in education, scholarship and research over thirty-five years. The School has approximately 1000 undergraduate and postgraduate students, including 40 research students, and approximately 55 full-time ongoing academic staff and 80 part-time staff. The School also has an international profile via exchange programs, a substantial intake of international students into onshore courses, and links with several international universities.

The School of Sport and Exercise Science offers a range of courses from undergraduate degree level to Doctoral level. The School boasts research and teaching expertise in a wide range of disciplines and professional applications including: biomechanics and kinesiology, exercise and sport physiology, exercise rehabilitation, motor learning and motor control, outdoor recreation, physical education and health, sport and exercise psychology, sport and recreation management, sport and recreation sociology, sport history, as well as sport philosophy and ethics.

Sport Ethics/Philosophy has a long history in the School and a solid place in the curriculum. Current research in this area includes: doping control and athlete rights; children’s rights in sport; technology and human development; coaching ethics; anti-discrimination and sport; and inclusive curriculum. Academic staff in this area work with colleagues in sport history and sociology of sport and recreation under the umbrella of the Sport and Culture Group, a collaborative group that supports research, conducts conferences and seminars, produces the *Bulletin of Sport and Culture*, and contributes to informed public debate on sport issues through the public media.

Not only considered a research discipline in its own right, Sport Ethics/Philosophy is included in the curriculum in order to ensure that graduates in physical education, sport counselling, exercise science, coaching, and sport management are critical-reflective practitioners and culturally competent, that is, able to work effectively in settings of social and cultural diversity.

Victoria University is a partner in the innovative Sports Triangle development, with the Western Bulldogs Football Club (at Whitten Oval) and with Maribyrnong College, the first elite Sports School in Victoria. The combined infrastructure development in sport and exercise at the University’s Footscray Park campus, at the Whitten Oval and at Maribyrnong College exceeds \$80M. These partnerships, world-class infrastructure, excellent staffing and strong research student programs offer outstanding opportunities for research and research training, education and engagement in sport, exercise and



physical education. Research and education in sport and exercise science in the School will be greatly strengthened by a new building containing \$30M world-class, multi-disciplinary Exercise Science and Sport laboratory facilities, to be completed at the Footscray Park campus over the next two years. These include laboratories for exercise physiology, exercise biochemistry & molecular biology, biomechanics, motor learning and skilled performance, motor control, psychology biofeedback, body composition, environmental physiology, as well as electronic and mechanical workshops. In addition, a major new multi-million dollar sport and exercise applied research and education centre will be established at the recently redeveloped Whitten Oval.

The School works closely with the University's partner the Western Bulldogs Football Club, and has a developing relationship with the Maribyrnong College (Elite Sport School), as well as strategic links with numerous sports and sport-related industries, including other elite professional sporting bodies to develop Sport Science opportunities for our students, staff and the Western Bulldogs. These relationships create outstanding opportunities for learning in the workplace and community for students and for excellence and participation in sports and exercise in the West.

The School of Sport and Exercise Science and its staff have very strong links with the Centre for Ageing, Rehabilitation, Exercise and Sport (CARES), a University Research Centre that will soon be upgraded to an Institute that will focus strongly on sport, exercise and active living.

The operations of the School of Sport and Exercise Science and this position are currently located at the Footscray Park campus of the University, though this position maybe relocated to any other existing or future campus. Some teaching may also occur at the University's sport and recreation facilities at the Whitten Oval. On occasion the incumbent may also be expected to travel to other campuses.

An Organisational Chart is attached.

MAJOR CHALLENGES / FREEDOM TO ACT

This position reports to and receives broad direction from the Head of School and operates within the University policies, procedures and guidelines.

The University is a progressive and rapidly developing organisation. Consequently, the successful applicant will need to be able to work effectively in a changing and sometimes uncertain environment, and to respond to change with creativity and resourcefulness.

The successful applicant is expected to show initiative and willingness to assist the School to reach and maintain stated goals and objectives in support of the overall strategic plans of the Faculty of Arts, Education and Human Development, and Victoria University.

A key challenge of the position will be to contribute across a range of academic responsibilities including teaching, research, course and unit coordination, research training supervision and strategic planning. This will involve the development of effective relationships with key sport industry organisations and employers, with a view to enhancing the profile of the Faculty as a leading provider of education and research in sport ethics/philosophy.

The position will see the incumbent involved in the expansion of Sport Ethics/Philosophy research, in



addition to providing new opportunities for Learning in the Workplace and Community, and community engagement with elite and community sporting organisations. The position may be involved in the work of CARES, most often with the School's postgraduate students working within CARES.

PRIMARY RESPONSIBILITIES

LECTURER A

General Standard

A Level A academic is expected to make contributions to the teaching effort of the University, particularly at undergraduate and graduate diploma level, and to carry out activities to develop his/her scholarly, research and/or professional expertise relevant to the profession or discipline. A Level A academic shall work with support and direction from academic staff classified at Level B and above and with an increasing degree of autonomy as the academic gains in skills and experience.

Specific duties:

In performing the following duties the incumbent is required to comply with quality assurance policies and procedures, and other relevant legislative requirements applicable to the University. Specific duties of a Level A academic may include:

- The preparation and delivery of lectures, tutorials and seminars in core and elective units in the Exercise Science, Human Movement, Physical Education and Sport and Recreation Management suite of courses provided that skills and experience demonstrate this capacity.
- Assist with the coordination, development and evaluation of applied ethics related units of study or components within units in the Exercise Science, Human Movement, Physical Education and Sport and Recreation Management suite of courses.
- Marking and assessment, the production of teaching materials, and consultation with students.
- Acting as unit(s) coordinator provided that skills and experience demonstrate this capacity.
- Assist with coordination of the Exercise Science, Human Movement, Physical Education and Sport Management suite of courses.
- Assist in the development and implementation of units using flexible modes of delivery and learning in the workplace and community.
- Involvement in research and scholarly activity in applied ethics related to sport, exercise, physical education, health, as well as sport management and policy, evidenced by continuing publications in refereed journals, books and conferences, and the assistance with the preparation and submission of grant applications for external research funding.
- Assist with supervision of student projects including Honours students and postgraduate research students.
- Contribute to operations of the Sport Ethics Unit, a research support, education program development, and community engagement unit, which is part of the School's Sport and Culture Group.
- Participation in the governance of the School, Faculty and/or the University as well as attendance at School and/or faculty meetings and/or membership of a limited number of Committees.
- Contribute to the development of new ethics/philosophy related courses or specializations within the Exercise Science, Human Movement, Physical Education and Sport and Recreation Management suite of courses.



- Contribute to providing sport philosophy/ethics career development opportunities for VU students and staff.
- Develop relationships with sporting organisations and relevant professional bodies for sport philosophy/ethics (e.g., International Association for the Philosophy of Sport) and allied disciplines and professions.
- Undertake other duties as required by the Head, School of Sport and Exercise Science
- Adhere to and cooperate with all OHS policies and procedures of the University

LECTURER B

General standard

A Level B academic is expected to make contributions to the teaching effort of the University, particularly at undergraduate and graduate diploma level, and to carry out activities to develop his/her scholarly, research and/or professional expertise relevant to the profession or discipline.

Specific duties:

In performing the following duties the incumbent is required to comply with quality assurance policies and procedures, and other relevant legislative requirements applicable to the University. Specific duties of a Level B academic may include:

- The preparation and delivery of lectures, tutorials and seminars in core and elective units in the Exercise Science, Human Movement, Physical Education and Sport and Recreation Management suite of courses.
- Coordinate, develop and evaluate ethics/philosophy related units or components in the Exercise Science, Human Movement, Physical Education, and Sport and Recreation Management suite of courses.
- Marking and assessment, unit evaluation, and consultation with students.
- Provide academic leadership in the Exercise Science, Human Movement, Physical Education, and Sport and Recreation Management suite of courses.
- Development and implementation of units using flexible modes of delivery and learning in the workplace and community.
- Involvement in research and scholarly activity in applied ethics related to sport, exercise, physical education, health, as well as sport management and policy, evidenced by continuing publications in refereed journals, books and conferences, and the assistance with the preparation and submission of grant applications for external research funding.
- Supervision of Honours and postgraduate research students.
- Contribute to operations of the Sport Ethics Unit, a research support, education program development, and community engagement unit which is part of the School's Sport and Culture Group.
- Contribute to the governance of School, Faculty and/or the University as well as attendance at School and/or faculty meetings and/or membership of a limited number of Committees.
- Contribute to the development of new ethics/philosophy related courses or specializations within the Exercise Science, Human Movement, Physical Education and Sport and Recreation Management suite of courses.
- Contribute to providing sport philosophy/ethics career development opportunities for VU students



and staff.

- Undertake other duties as required by the Head, School of Sport and Exercise Science.
- Adhere to and cooperate with all OHS policies and procedures of the University.

SELECTION CRITERIA

LECTURER A

Essential Criteria:

1. Evidence of completion or near-completion of doctoral qualification in sport ethics/philosophy, or allied field (e.g., health ethics, education ethics, medical ethics, business ethics).
2. Evidence of strong potential for the development of an outstanding teaching and academic leadership record in applied ethics/philosophy of sport, physical education, health, and sport management/policy.
3. Evidence of strong potential for the development of an outstanding research record in applied ethics/philosophy of sport, physical education, health, and sport management/policy, including significant research publications, conference presentations and grant funding.
4. Demonstrated capacity to work collaboratively in teaching and research.
5. Demonstrated capacity to apply ethics/philosophy to issues, policies and problems in sport, exercise, physical education, health, sport management and related areas.
6. Demonstrated capacity to evaluate one's own teaching and research performance.
7. High level of computer and internet literacy.
8. Excellent oral and written communication skills
9. A satisfactory Police Record Check and Working with Children Check
10. Awareness of OHS responsibilities and willingness to attend OHS training as required.
11. Willingness to commit to Victoria University's values which are:
 - knowledge and skills, and critical and imaginative inquiry for their capacity to transform individuals and the community;
 - equality of opportunity for students and staff;
 - diversity for its contribution to creativity and the enrichment of life;
 - co-operation as the basis of engagement with local and international communities;
 - integrity, respect and transparency in personal and collaborative action; and
 - the pursuit of excellence in everything we do.



Desirable

1. Application of ethics/philosophy knowledge and methods to problems, policies and issues in sport media, law and management.
2. Potential to use flexible and creative modes of delivery to facilitate successful learning outcomes.
3. Potential to engage in multi and cross-disciplinary teaching and research.

LECTURER B

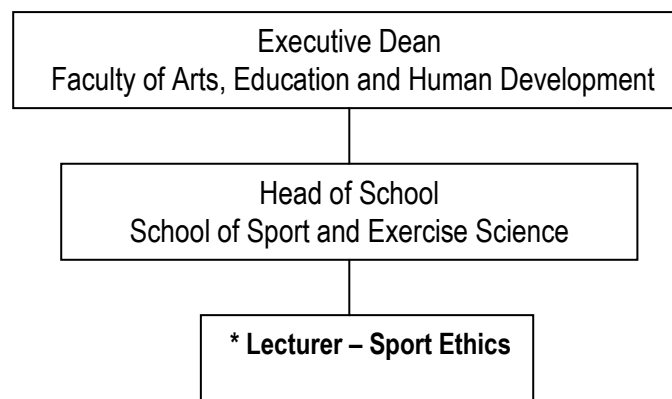
Essential :

1. Doctoral qualification in sport ethics/philosophy, or allied field (e.g., health ethics, education ethics, medical ethics, business ethics).
2. Evidence of an outstanding teaching and academic leadership record in sport ethics/philosophy.
3. Evidence of strong research record including significant research publications, conference presentations and grant funding.
4. Demonstrated capacity to work collaboratively in teaching and research.
5. Demonstrated capacity to apply ethics/philosophy to applied issues and problems in sport, exercise, physical education, health, sport management and related areas.
6. Demonstrated capacity to evaluate one's own teaching and research performance.
7. High level of computer and internet literacy.
8. Excellent oral and written communication skills
9. A satisfactory Police Record Check and Working with Children Check
10. Awareness of OHS responsibilities and willingness to attend OHS training as required.
11. Willingness to commit to Victoria University's values which are:
 - knowledge and skills, and critical and imaginative inquiry for their capacity to transform individuals and the community;
 - equality of opportunity for students and staff;
 - diversity for its contribution to creativity and the enrichment of life;
 - co-operation as the basis of engagement with local and international communities;
 - integrity, respect and transparency in personal and collaborative action; and
 - the pursuit of excellence in everything we do.

Desirable

1. Application of sport ethics/philosophy knowledge to problems, policies and issues in sport media, law and management.
2. Potential to use flexible and creative modes of delivery to facilitate successful learning outcomes.
3. Potential to engage in multi and cross-disciplinary teaching and research.

ORGANISATIONAL CHART



*Denotes the position